

## Office Space for Lease: 1110 W. Park Place, Suite 202 Coeur d'Alene, Idaho

-1,328 square feet

-\$2150 per month

-\$1.62 psf monthly

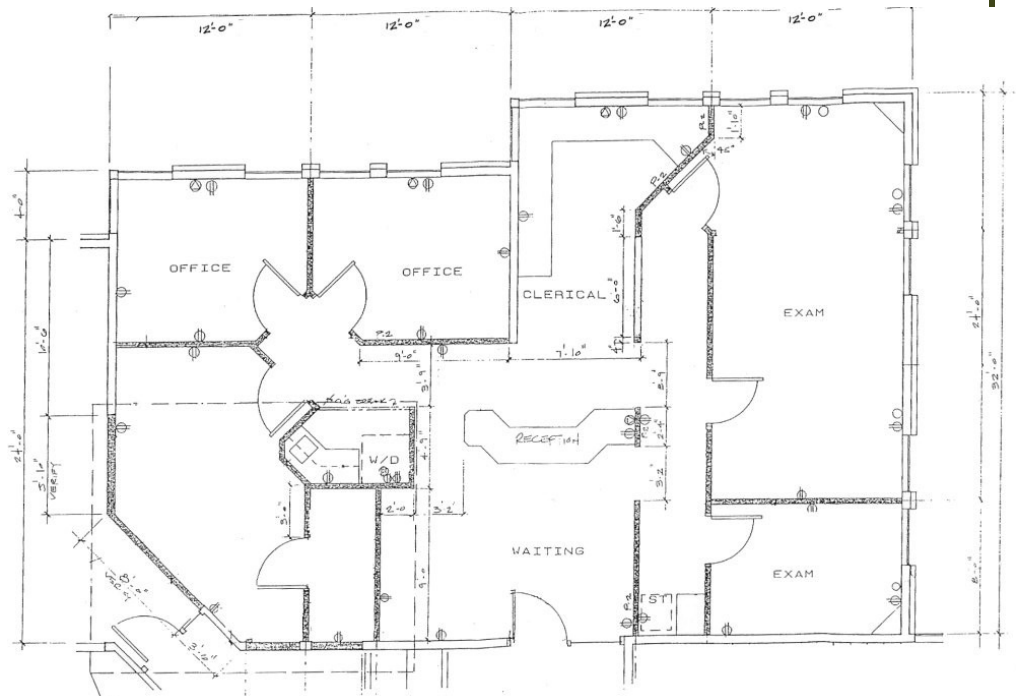
-All services are included for this office space except janitorial in the suite and telephone/data service.

-2 private offices, large open space and one admin or exam room as well as coffee bar and storage.

-Suite can be converted to general office or serve medical use.



One of the nicest office buildings in town with an interior slate courtyard with skylights, granite pond, glass elevator and conference room. This two-story building is located on Lakewood Dr., with easy access from both Ironwood Dr. and Northwest Boulevard. The building exterior is brick with reflective glass.



Jim Valle  
208-667-4086

jvalle@parkwoodproperties.com