

## Office Space for Lease: 1110 W. Park Place, Suite 304 Coeur d'Alene, Idaho

-616 square feet

-\$1,025 per month

-\$1.66 psf monthly

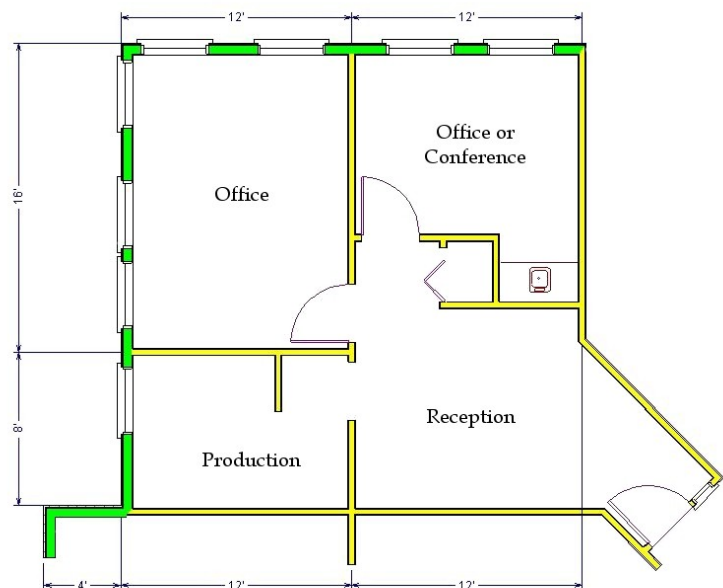
-All services are included for this office space except janitorial in the suite and telephone/data service.

-2 private offices, or one office and private conference room with coffee bar. Reception area and production space for printers, etc.

-Can be combined with neighboring suite to create 1,000 sf



One of the nicest office buildings in town with an interior slate courtyard with skylights, granite pond, glass elevator and conference room. This two-story building is located just off Lakewood Dr., with easy access from both Ironwood Dr. and Northwest Boulevard. The building exterior is brick with reflective glass.



Jim Valle  
208-667-4086  
jvalle@parkwoodproperties.com