

Office Space for Lease: 1110 W. Park Place, Suite 305 Coeur d'Alene, Idaho

-384 square feet

-\$675 per month

-\$1.75 psf monthly

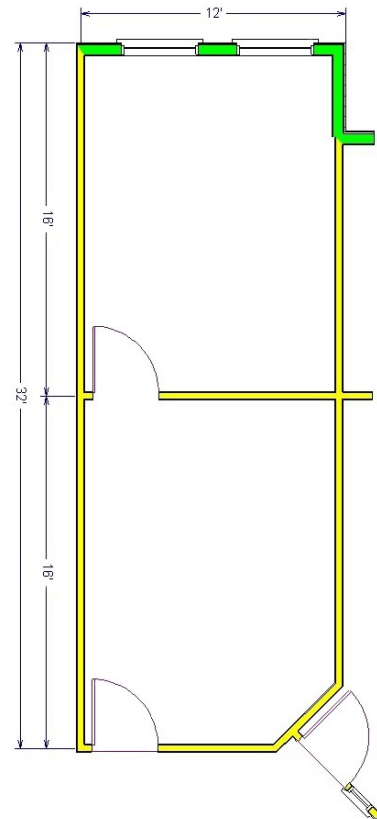
-All services are included for this office space except janitorial in the suite and telephone/data service.

-1 generous private office and reception area.

-On same floor as common area conference room available at no charge.



One of the nicest office buildings in town with an interior slate courtyard with skylights, granite pond, glass elevator and conference room. This two-story building is located just off Lakewood Dr., with easy access from both Ironwood Dr. and Northwest Boulevard. The building exterior is brick with reflective glass.



Jim Valle
208-667-4086

jvalle@parkwoodproperties.com