

Office Space for Lease: 2100 Northwest Boulevard, Suite 210 Coeur d'Alene, Idaho

-1,442 square feet

-\$2,373 per month

-\$1.65 psf monthly

-NNN Lease

-Tenant is responsible for a pro-rata share of expenses.

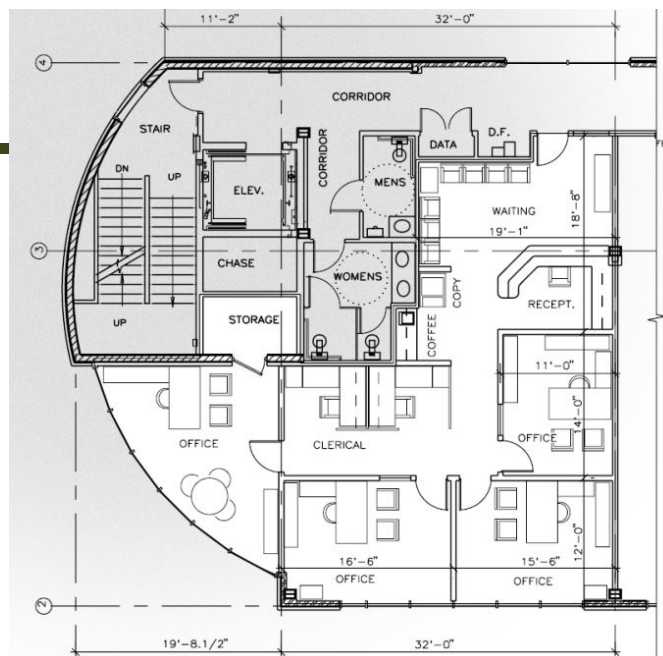
-Excellent location on the route to downtown Coeur d'Alene.

-Suite can include four offices, open workspace, reception and coffee bar/work area.

-High end amenities including common area conference room with a deck and fiber connectivity!



We are excited to announce the opening of Coeur d'Alene's premier office building. This Class A project includes four stories of office space and one floor of underground parking. RiverView Tower is available to individuals or companies interested in buying or leasing. This facility is located on Northwest Boulevard, one block south of the Ironwood Drive and Northwest Boulevard intersection. The building has 180 degree panorama views of Lake Coeur d'Alene and the Spokane area



Jim Valle
208-667-4086

jvalle@parkwoodproperties.com