

Office Space for Lease: 700 Ironwood Drive, Suite 210 Coeur d'Alene, Idaho

-2,088 square feet

-\$2,780 per month

-\$1.33 psf monthly

-Tenant is responsible for pro-rata share of expenses.

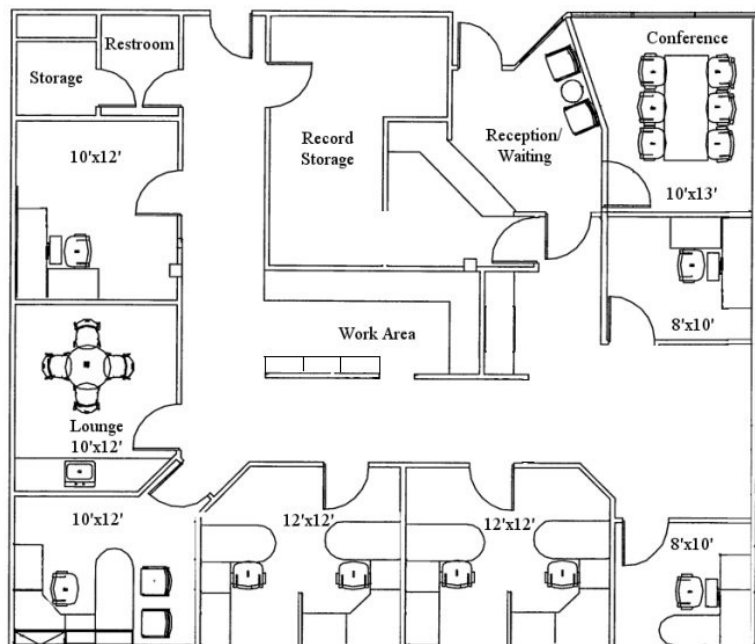
-Professional office space easily converted to medical use.

-6 offices can be remodeled to 2 offices and 4 exam rooms (plumbing in place from prior use).

-Great location on the corner of Ironwood Drive and Hwy 95.



The Interlake Medical Building is Coeur d'Alene's premier medical facility, complete with lab, radiology and pharmacy services. Also home to the North Idaho Cancer Center. Unique accessibility to Kootenai Medical Center via underground tunnel.



Jim Valle
208-667-4086

jvalle@parkwoodproperties.com