

PRAIRIE SHOPPING CENTER, SUITE 85

NORTH IDAHO'S PREMIER POWER CENTER 85 W PRAIRIE, COEUR D'ALENE, ID



FEATURES

- 2,800 SF Available
- \$16 per square foot, NNN (3,733.33 Month)
- Estimated NNN's: \$3.12/PSF

| 09 Demographics | 1 Mile | 3 Mile | 5 Mile |
|--------------------|----------|----------|----------|
| 09 Est Population | 5,042 | 35,675 | 67,618 |
| 14 Proj Population | 5,620 | 39,423 | 73,343 |
| Proj Growth 09-14 | 2.3% | 2.1% | 1.7% |
| Est 09 Average HHI | \$60,079 | \$60,239 | \$60,654 |
| Est 09 Median HHI | \$46,631 | \$47,250 | \$46,518 |

| Traffic Counts | |
|-----------------|-------------|
| Highway 95: | 25,000± ADT |
| Government Way: | 15,000± ADT |
| Prairie Avenue: | 11,000± ADT |



FOR LEASE

CONTACTS

Carl Guenzel
509.755.7543
carlg@khco.com

601 W. Main Ave., #400
Spokane, WA 99201
Main: 509.838.6541
Fax: 509.458.4014
www.khco.com

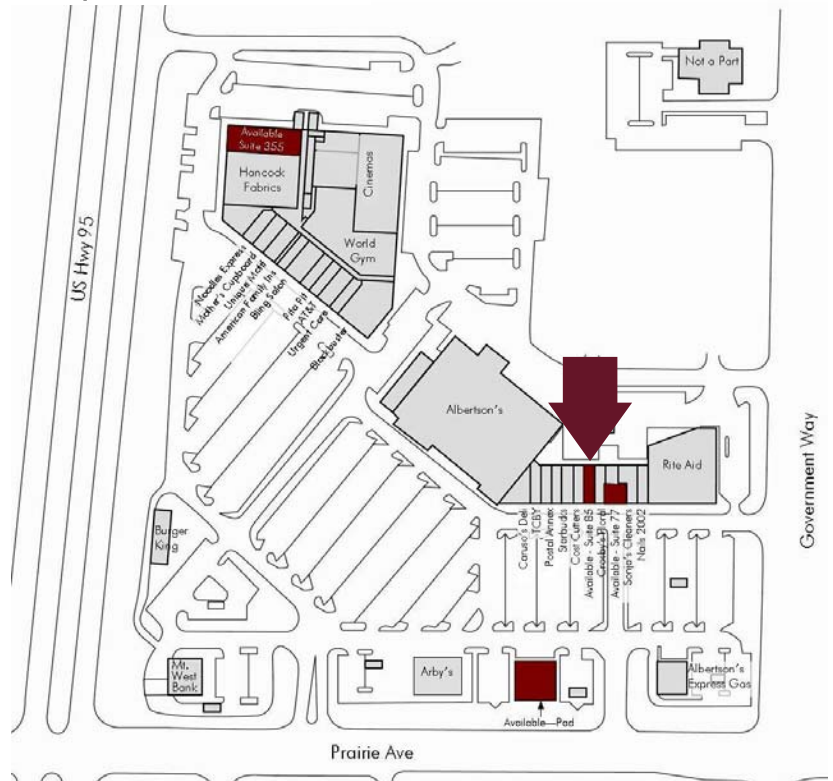
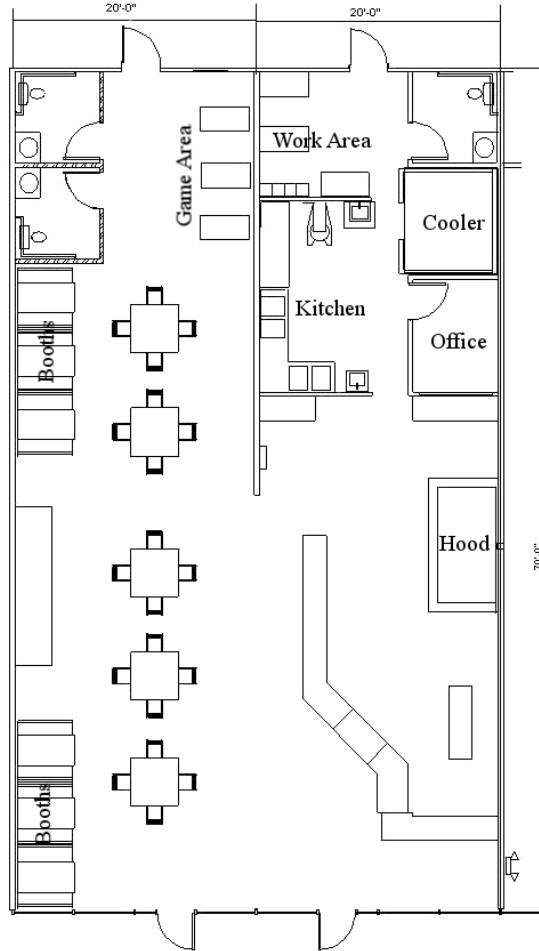
No warranty or representation, expressed or implied, is made by Kiemle & Hagood Company, its agents or its employees as to the accuracy of the information contained herein. All information furnished is from sources deemed reliable and submitted subject to errors, omissions, change of terms and conditions, prior sale, lease or financing, or withdrawal without notice. No one should rely solely on the above information, but instead should conduct their own investigation to independently satisfy themselves

**KIEMLE &
HAGOOD
COMPANY**

SITE & FLOOR PLAN

Existing tenants include:

- Albertson's
- Rite Aid
- Blockbuster Video
- Hancock Fabrics
- Burger King
- Arby's
- Starbucks
- Cost Cutters
- Postal Annex
- Papa Murphy's Pizza
- TCBY
- Noodles Express
- Bling Salon
- Caruso's Deli
- Sonja's Cleaners
- Nails 2002
- Mother's Cupboard Nutrition
- American Family Insurance
- Pita Pit
- Urgent Care
- Crosby's Floral



CONTACTS

Carl Guenzel
509.755.7543
carlg@khco.com

601 W. Main Ave., #400
 Spokane, WA 99201
 Main: 509.838.6541
 Fax: 509.458.4014
 www.khco.com

No warranty or representation, expressed or implied, is made by Kiemle & Hagood Company, its agents or its employees as to the accuracy of the information contained herein. All information furnished is from sources deemed reliable and submitted subject to errors, omissions, change of terms and conditions, prior sale, lease or financing, or withdrawal without notice. No one should rely solely on the above information, but instead should conduct their own investigation to independently satisfy themselves

**KIEMLE &
 HAGOOD
 COMPANY**